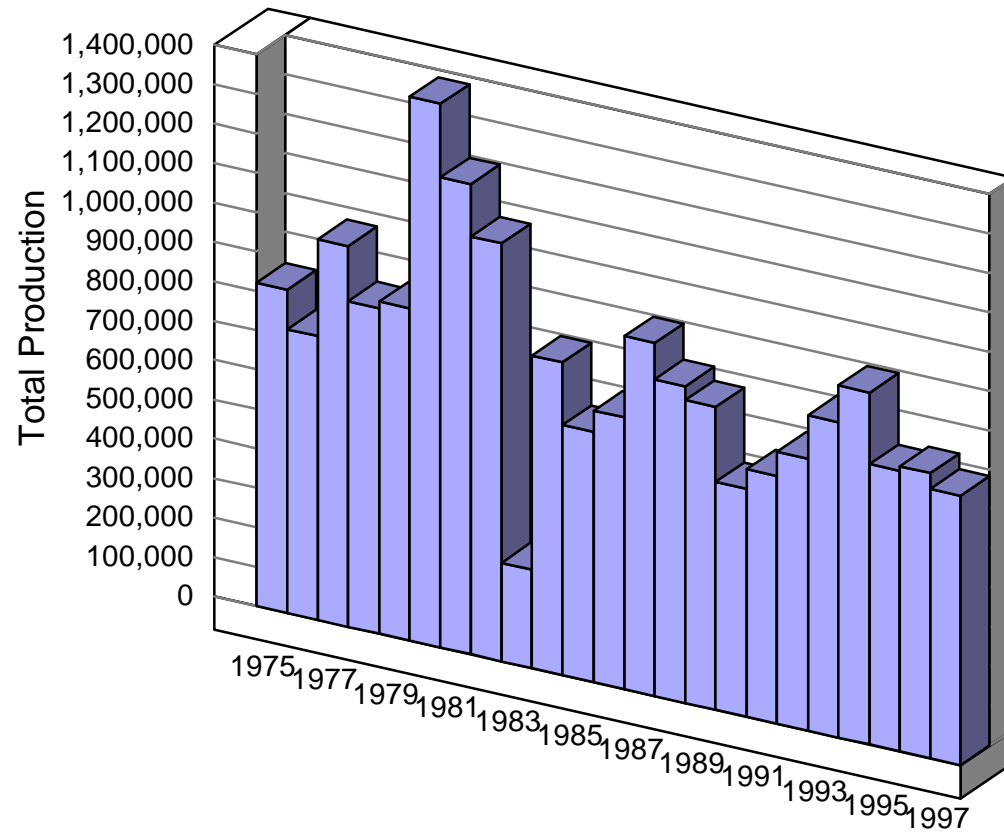


Massachusetts Firearms Production 1975-1997

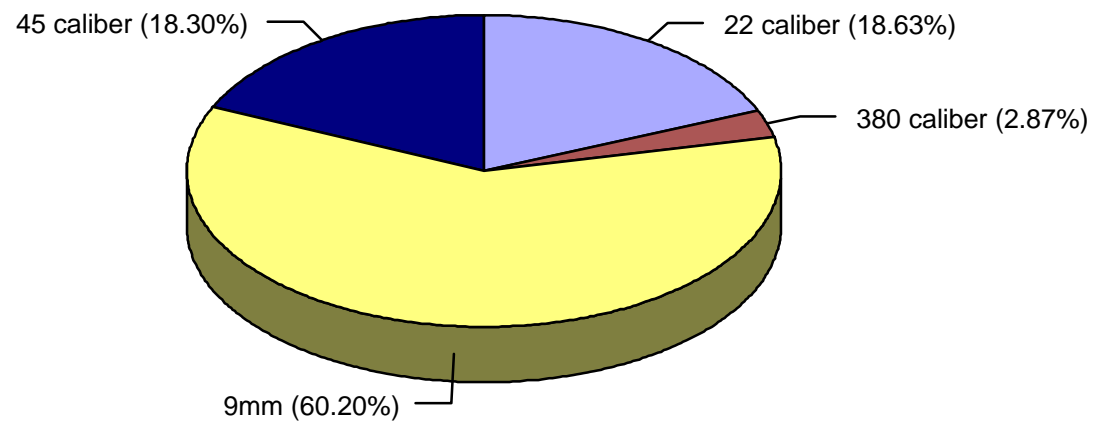


Massachusetts Pistol Production

Year	Caliber						Total
	.22	.25	.32	.380	9mm	.45	
1975	2,181	0	0	66	35,537	0	37,784
1976	695	0	0	0	53,714	0	54,409
1977	2,939	0	0	563	61,010	0	64,512
1978	2,946	0	0	905	44,560	0	48,411
1979	6,898	0	0	1,772	53,797	0	62,467
1980	19,568	0	0	1,669	50,425	0	71,662
1981	11,808	0	0	2,621	60,637	0	75,066
1982	5,538	0	0	2,956	62,302	0	70,796
1983	2,054	0	0	502	13,286	0	15,842
1984	3,612	0	0	469	47,757	0	51,838
1985	7,530	0	0	368	36,790	0	44,688
1986	3,442	0	0	751	37,021	22,283	63,497
1987	29,384	0	0	821	74,837	33,792	138,834

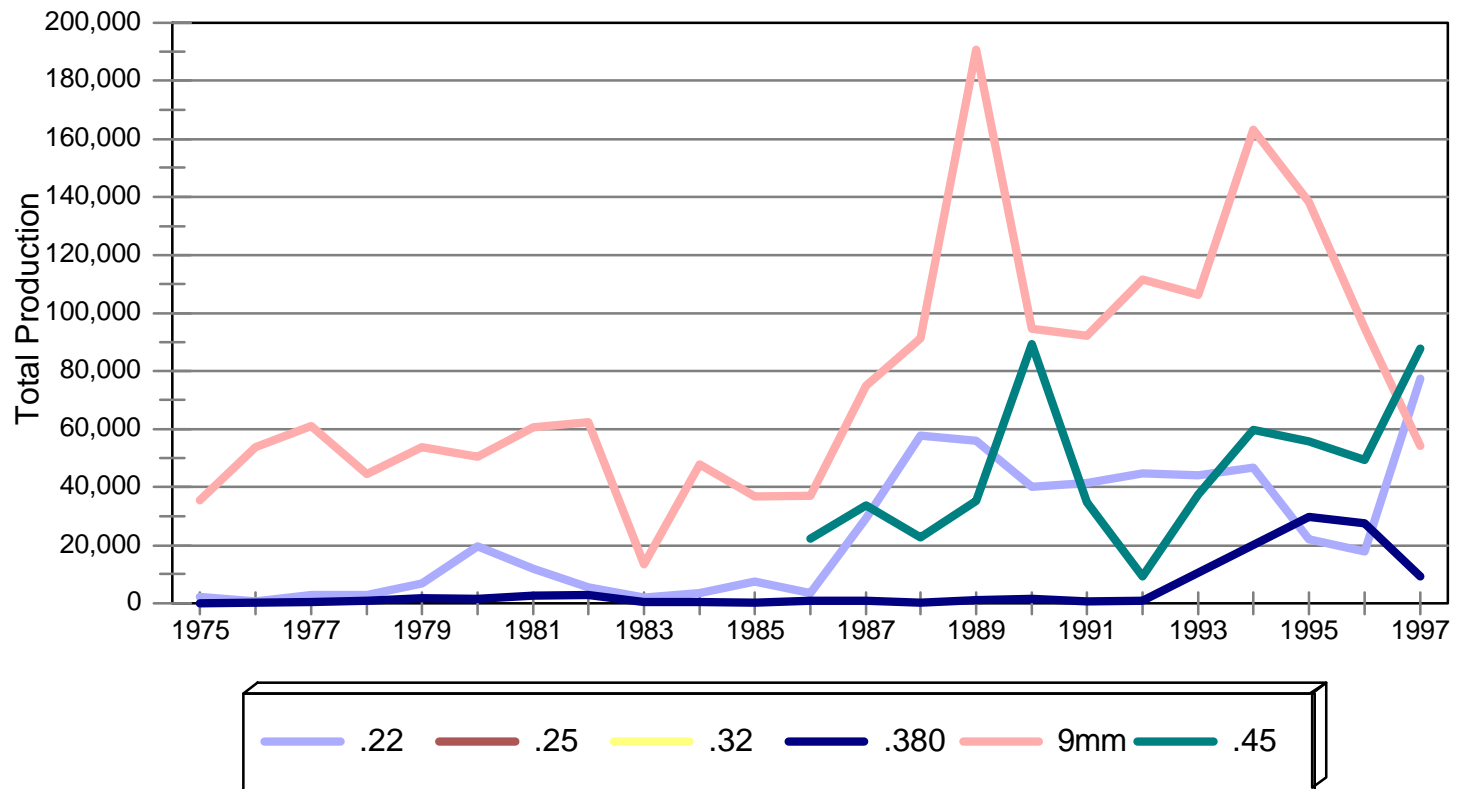
Year	Caliber						Total
	.22	.25	.32	.380	9mm	.45	
1988	57,729	0	0	119	91,277	22,815	171,940
1989	56,017	0	0	1,150	190,753	35,349	283,269
1990	40,303	0	0	1,677	94,529	89,375	225,884
1991	41,410	0	0	700	92,141	34,836	169,087
1992	44,841	0	0	805	111,580	9,249	166,475
1993	44,013	0	0	0	106,405	37,575	187,993
1994	46,785	0	0	0	163,021	59,743	269,549
1995	22,136	0	0	29,604	138,166	55,773	245,679
1996	18,002	0	0	27,570	94,759	49,311	189,642
1997	77,412	0	0	9,178	54,288	87,673	228,551
Total	547,243	0	0	84,266	1,768,592	537,774	2,937,875

Massachusetts Pistol Production By Caliber, 1975-1997



Massachusetts Pistol Production

By Caliber, 1975-1997



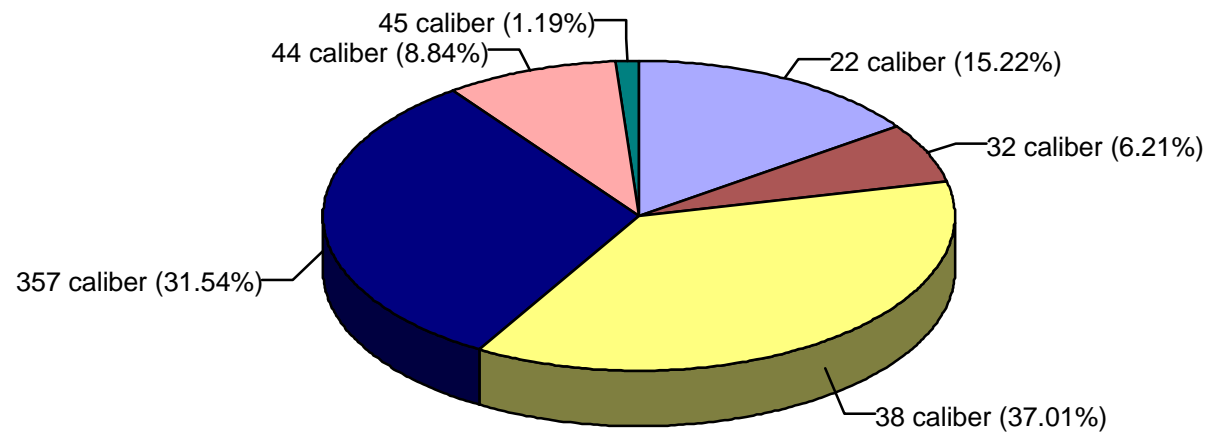
Massachusetts Revolver Production

Year	Caliber						Total
	.22	.32	.38	.357	.44	.45	
1975	109,224	65,494	290,455	129,836	23,407	1,347	619,763
1976	78,900	41,107	324,739	128,982	21,275	5,995	600,998
1977	197,963	42,177	320,664	158,180	38,659	2,707	760,350
1978	116,187	32,980	305,912	176,037	43,448	7,036	681,600
1979	104,786	33,389	247,189	209,876	48,059	5,895	649,194
1980	265,938	148,788	173,909	233,475	54,153	21,686	897,949
1981	214,792	108,193	276,884	213,079	57,663	8,053	878,664
1982	124,306	49,319	341,828	235,109	41,264	5,564	797,390
1983	13,214	4,940	92,212	64,037	8,188	252	182,843
1984	49,451	25,769	196,357	207,250	59,034	3,473	541,334
1985	39,601	15,581	146,346	185,183	93,146	8,509	488,366
1986	15,998	4,110	109,804	273,622	79,288	4,386	487,208
1987	14,382	2,374	150,555	200,061	55,976	1,348	424,696

Year	Caliber						Total
	.22	.32	.38	.357	.44	.45	
1988	42,233	18,527	105,173	175,069	65,070	145	406,217
1989	35,933	14,099	102,345	95,926	44,019	17,999	310,321
1990	30,961	19,762	102,963	86,443	30,289	12,867	283,285
1991	23,707	9,154	103,638	95,518	39,798	5,181	276,996
1992	29,348	9,863	111,026	94,213	31,507	1,473	277,430
1993	33,848	9,561	122,541	93,432	22,261	3,394	285,037
1994	30,330	7,939	109,398	103,846	27,910	2,261	281,684
1995	17,607	3,140	80,178	136,247	29,534	2,158	268,864
1996	22,954	2,132	105,094	78,237	20,263	5,583	234,263
1997	32,597	1,942	78,339	32,765	20,222	812	166,677
Total	1,644,260	670,340	3,997,549	3,406,423	954,433	128,124	10,801,129

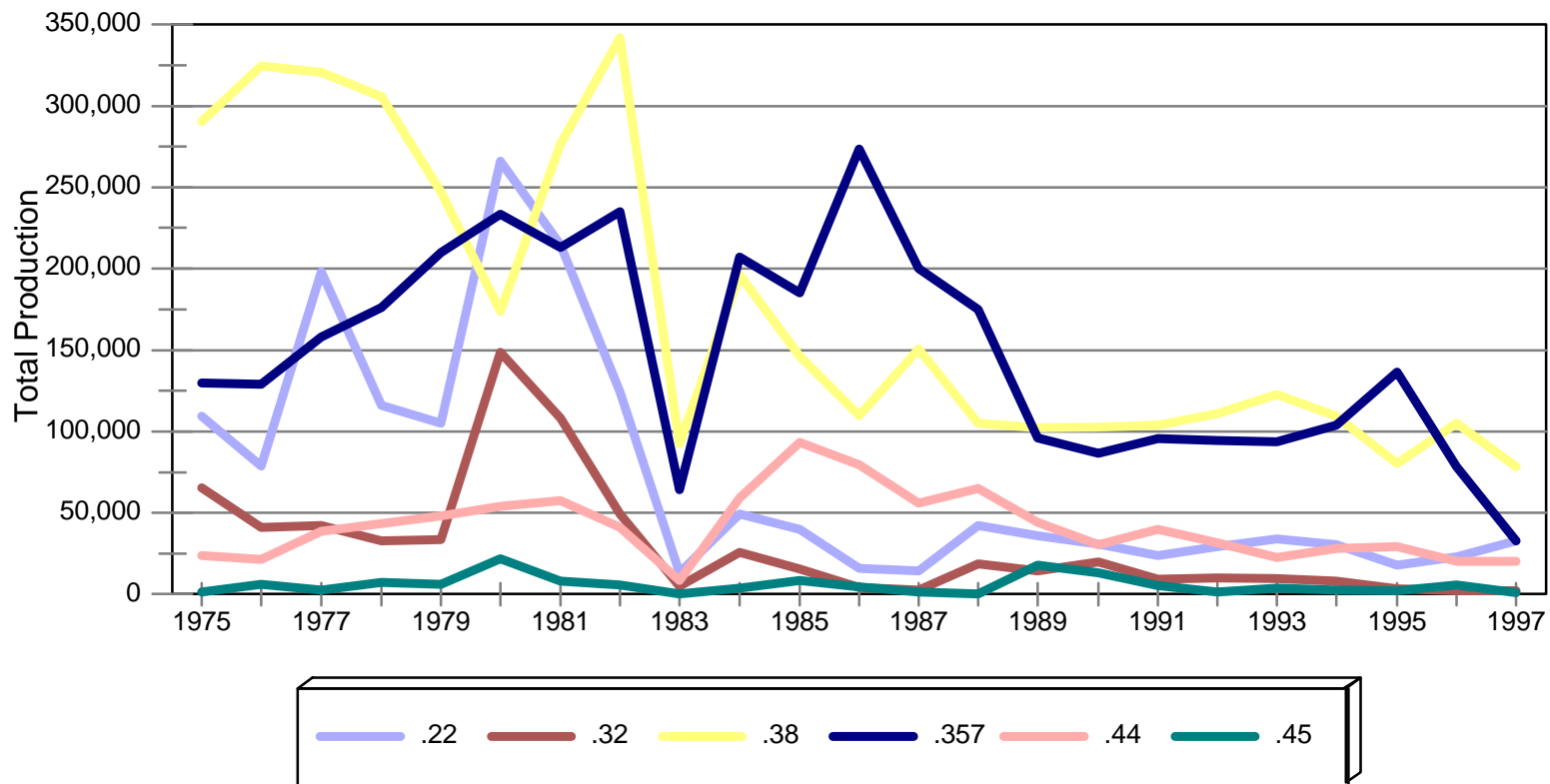
Massachusetts Revolver Production

By Caliber, 1975-1997



Massachusetts Revolver Production

By Caliber, 1975-1997



Massachusetts Long Gun Production

Year	Rifle	Shotgun	Total
1975	11,681	151,473	163,154
1976	4,801	60,032	64,833
1977	18,200	123,524	141,724
1978	12,368	83,144	95,512
1979	2,502	128,917	131,419
1980	12,375	398,089	410,464
1981	11,959	228,639	240,598
1982	11,338	181,613	192,951
1983	1,993	50,190	52,183
1984	5,958	195,285	201,243
1985	5,233	97,298	102,531
1986	48,912	89,102	138,014

Year	Rifle	Shotgun	Total
1987	65,440	266,904	332,344
1988	46,752	178,799	225,551
1989	78,981	95,344	174,325
1990	5,065	64,363	69,428
1991	58,550	123,460	182,010
1992	66,283	180,493	246,776
1993	83,196	244,377	327,573
1994	123,666	218,360	342,026
1995	31,130	165,813	196,943
1996	128,766	171,782	300,548
1997	100,946	188,815	289,761
Total	936,095	3,685,816	4,621,911

Massachusetts Long Gun Production

1975-1997

